

**intuit
DOME**



COMMUNITY MEETING

**THURSDAY, AUGUST 4, 2022
6 PM – 7:30 PM**

DOLORES HUERTA ELEMENTARY

AECOM Turner

NBA JOINT VENTURE

TEAM INTRODUCTIONS

JUNE MEETING RECAP

- Approximately 22 attendees
- General project information provided and updates on construction progress
- Questions received and responded to included:
 - Small business partnerships
 - Wastewater recycling
 - Arena jobs for veterans
- Meeting PowerPoints are posted on the website (English and Spanish)
 - buildintuitdome.com/community-updates > “June Community Meeting”

THE INTUIT DOME

The 915,000 square foot arena will include state-of-the-art and community-oriented features such as:

- Outdoor Plaza
- Community Basketball Court
- Pedestrian Bridge
- 18,000 Seats
- 360° scoreboard
- “The Wall”



SUSTAINABILITY

Intuit Dome is pursuing LEED (Leadership in Energy and Environmental Design) certification for both the Intuit Dome and the Plaza buildings:

- Intuit Dome is targeting LEED Platinum, which is the highest level of certification
- Plaza Buildings are targeting LEED Gold certification

Green Project Materials:

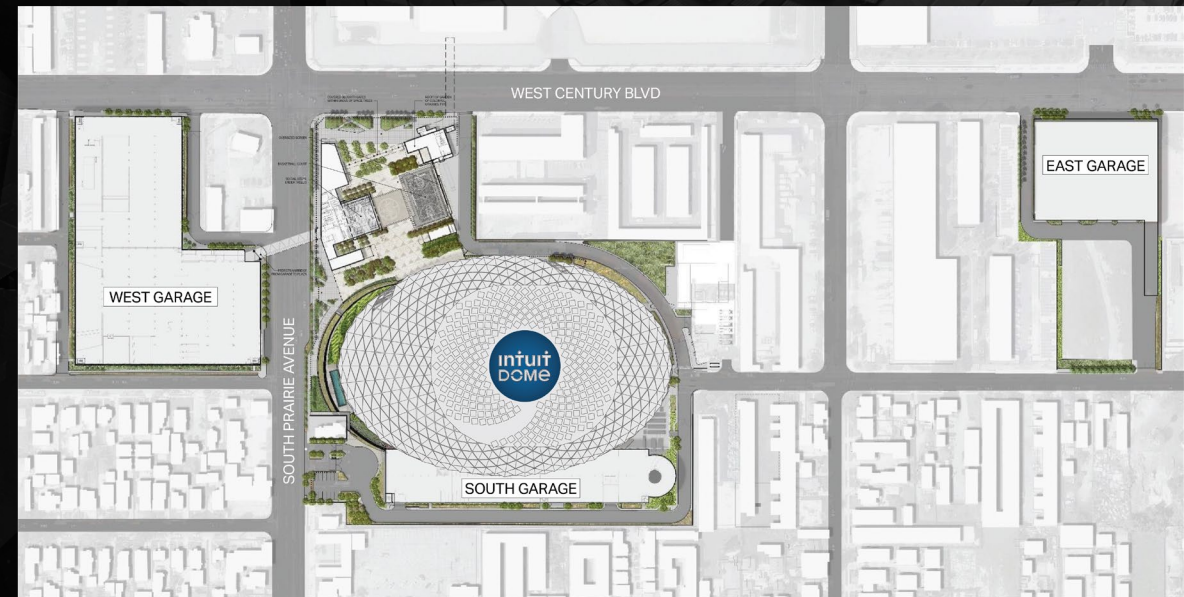
- The concrete that is currently being poured has an embodied carbon that is over 25% less than the local standard and is utilizing materials sourced from within 100 miles.
- The concrete is also using an innovation called Carbon Cure, which introduces recycled CO2 into fresh concrete to further reduce the embodied carbon
- AHJTV's Construction Waste Management plan targets the diversion of at least 75% of the different, non-hazardous construction wastes to a recycling facility rather than to a landfill.



SITE OVERVIEW



Aerial View



Complete Buildout

PROJECT MILESTONES

EXCAVATION COMPLETED: MID-FEBRUARY '22

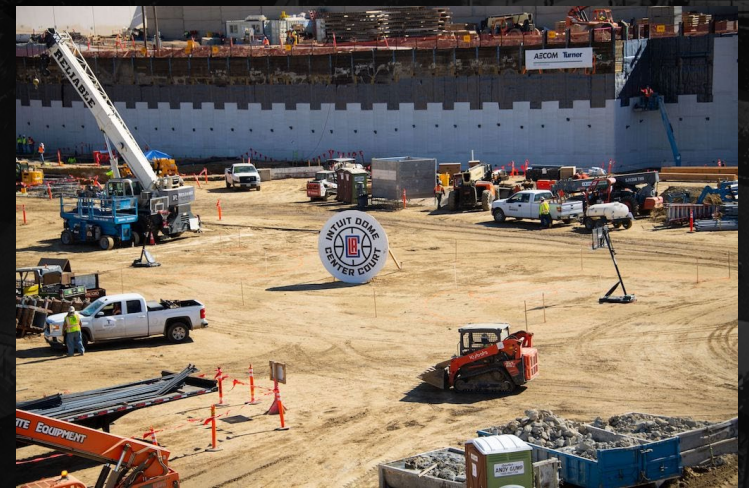
STRUCTURAL CONCRETE FRAME COMPLETED: JULY '22

STRUCTURAL STEEL: MID-JUNE '22 THROUGH MID-MARCH '23

EXTERIOR ENCLOSURE: OCTOBER '22 - APRIL '23

INTERIOR AND FINISHING TOUCHES: APRIL '23 - FALL 2024

GRAND OPENING: '24-'25 NBA SEASON



ARENA CONSTRUCTION UPDATES

ONSITE UTILITIES CONTINUE

SHORING, TIEBACKS AND EXCAVATION TO APPROX. 35' BELOW
SURFACE COMPLETED IN FEBRUARY 2022

FOUNDATION WORK IS COMPLETE

CONCRETE ELEVATED DECKS IS ONGOING

DEEP ELECTRICAL AND PLUMBING UNDERGROUND IS ONGOING

VERTICAL CONCRETE (WALLS AND COLUMNS) HAS STARTED



UPCOMING ROAD CLOSURES

Prairie Ave—Underground Work

BEGINNING MONDAY, JULY 18, 2022 – NOVEMBER 2022*

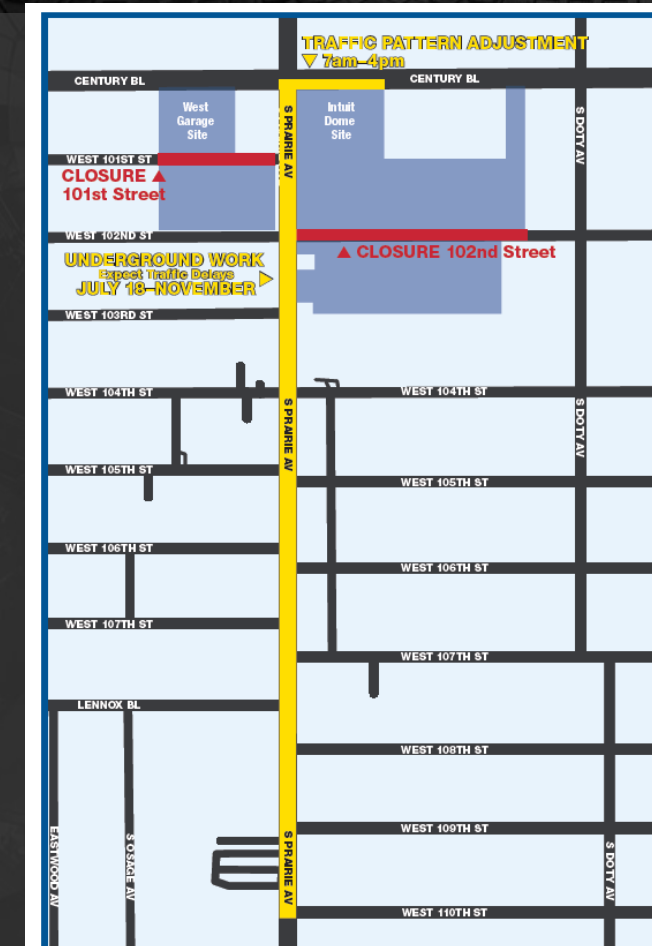
From Century Bl to 111th St, Monday-Friday, 8am-4pm

103rd St—Street Repaving

BEGINNING APPROXIMATELY AUGUST 15 – AUGUST 22, 2022

From Freeman Av to Prairie Av, Monday-Friday, 8am-4pm

Access to driveways restored after 4pm



COMMUNITY ENGAGEMENT

AHTJV IN THE COMMUNITY



Councilman Morales Family Day at Ashwood Park– JUNE 14, 2022
Good Neighbor Plan Event – JUNE 25, 2022

BUSINESS INCLUSION CONSTRUCTION CAREERS

M/DBE subcontractors who are ready to do business are invited to the bid/procurement process as either a prime bidder or second tier subcontractor.

M/DBE ENGAGEMENT PROCESS

SUBCONTRACTOR QUALIFICATION FORM

Firm is vetted, asked to pre-qualify, and then the Outreach + Community Engagement Team sends a qualification form to learn more about their company.

BUILDING CONNECTED INVITATION

Firms are added to BuildingConnected (procurement platform) with a chance either to be a prime bidder (per their qualifications) or as a second-tier bidder.

M/DBE PROCUREMENT LIST

Qualified M/DBE firms are marketed to the prime bidders for ongoing procurement engagement to maximize participation.

BID NOTIFICATIONS

Prime bidders are notified of the bid invitation and equipped with M/DBE requirements and the second-tier list.

BUSINESS INCLUSION CONSTRUCTION CAREERS

If you're interested in working in the construction industry trades for career opportunities associated with the Intuit Dome, contact us! Scan the code to fill out our intake form, or visit <https://qrco.de/intuitdomeCC>

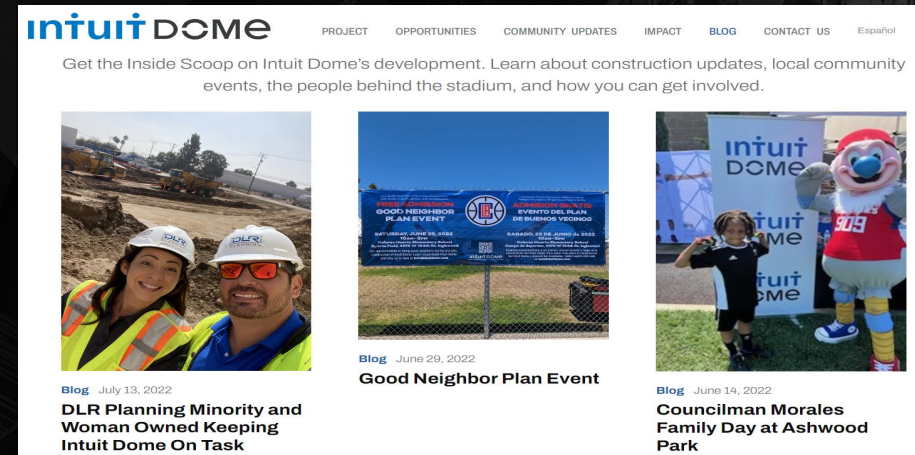
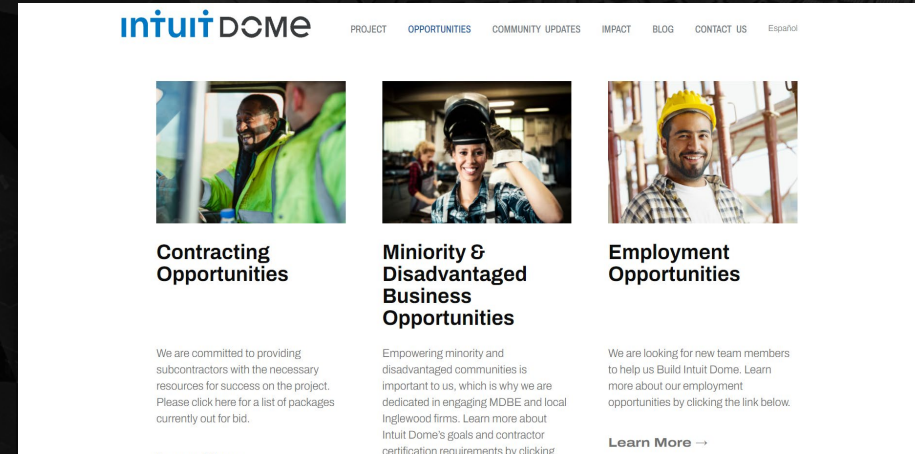
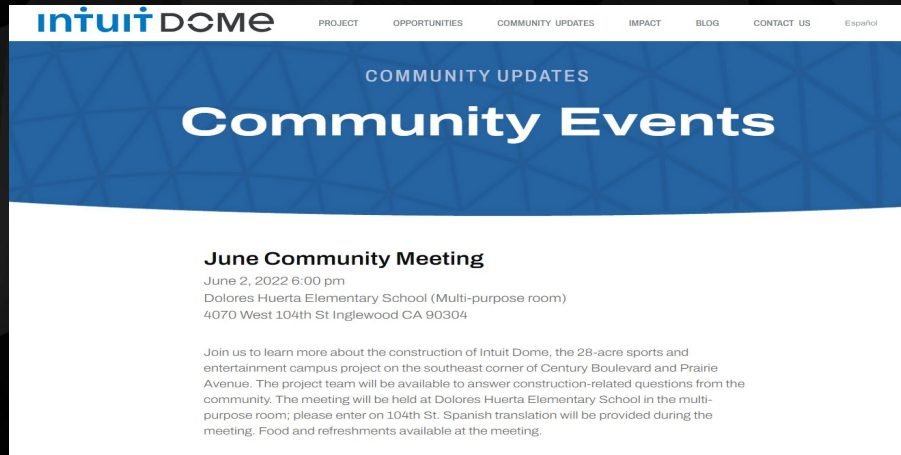
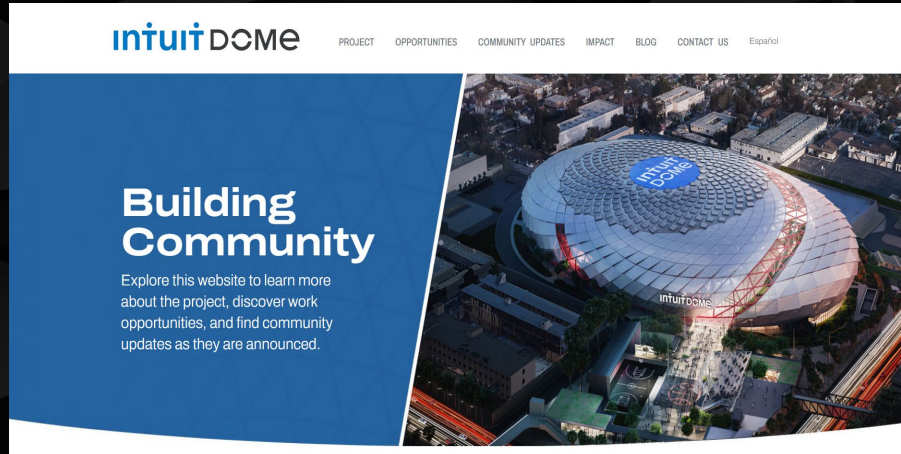
Mya Thomas, Jobs Coordinator

Phone: (424) 356-3014

Email: localhire.intuitdome@pdaconsultinggroup.com



WEBSITE – BUILDINTUITDOME.COM



Q & A

intuit
DOME



intuit DOME

**THANK YOU
FOR JOINING US TODAY**

AECOM Turner

NBA JOINT VENTURE

CONTACT US

PHONE: (323) 638-9008

INSTAGRAM: @BUILDINTUITDOME

EMAIL: BUILDINTUITDOME@TCCO.COM

[FACEBOOK.COM/BUILDINTUITDOME](https://www.facebook.com/BUILDINTUITDOME)

WEBSITE: [HTTPS://BUILDINTUITDOME.COM](https://BUILDINTUITDOME.COM)

JOB OPPORTUNITIES:

LOCALHIRE.INTUITDOME@PDACONSULTINGGROUP.COM